

## Programmable Text-Display has many features:

- Monitoring: by the data, the curve, the graph, or the characters to reflect PLC interior status and stored data, thus intuitively reflects the industry control system, the flow, and the trend.
- Control: May change the PLC interior status through the pressed key, stored data value. For example: The changing action, setting the real-time clock and so on.
- Data processing: Real-time sampling and information processing.
- The windows are made with the software SH-300 on PC.
- Alarm List function: The current alarm information is displayed one by one.
- Password protecting function.
- It has 20 keys, which can be defined as function keys. There is a keyboard for numeric input. The manipulation is simple. Some of the mechanic buttons on the controlling cabinet can be substituted by keyboard.
- STN LCD with background lights. Four rows (24 western or 12 Chinese characters in every row) of characters can be displayed at the same time.
- It is compact size, artistic appearance and the connection is simple.
- The front panel of the SH-300 accords with IP65 standard. It is water-resistant and grease-resistant.

## Technical Specifications

### Hardware Specifications

Screen	4.3" STN LCD
Resolution	192 × 64 pixels
LCM Life	With 25±2°C, 65±10%RH over 50000 hours
Brightness	60 cd/m <sup>2</sup>
Color	single color
Contrast	adjustable resistor
Backlight	longlife yellow/green LED
Memory	110KB Flash ROM
Communication Port	PC RS232 & PLC RS485/422 & PLC RS232
Function Key	20 custom keys, including 12 numeric inputs
allowable current drop	≤ 20ms

### General Specifications

Supply Power	12~24 VDC ±10% <150mA @ 24VDC
Interference withstand test	voltage 1500Vp-p, pulse period 1us, sustain 1s
Withstanding Voltage Test	500 V AC 1 minute
Insulation Resistance	Over 10M ohm @ 500V DC
Seismic Test	10 ~ 25 Hz (X, Y, Z direction 2G 30 minutes)
Protection Level	IP65 ( front panel )
Working Environment Temperature	-10 ~ 60 ° C
Working Environment Humidity	20 ~ 90 % RH (non-condensation)
Storage Temperature	-20 ° C ~ 70 ° C
House Material	Industrial plastics ABS + PC
Frame Dimension	171.8 × 84.2 × 38.6mm
Display Dimension	97.0 × 34.5mm
Installation Perforation Dimension	165 × 85mm
Cooling Method	Natural air cooling
Weight	260g

# Super Text-Display SH-300

ARRAY

Remarkable function, high performance, low cost  
your best choice of electronic display



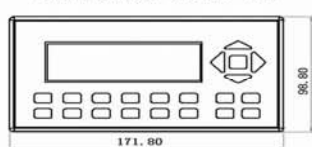
Ver : 1.0

ARRAY ELECTRONIC CO., LTD TEL: 86-25-52801556-223 224 225 226 FAX: 86-25-52801218 <http://www.array.sh>

# Super Text-Display SH-300

## Dimensions

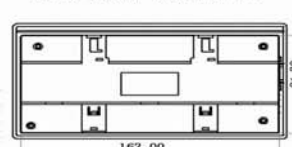
Front panel (unit: mm)



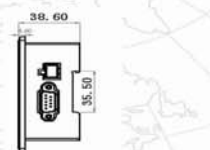
Top view (unit: mm)



Back panel (unit: mm)



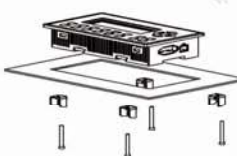
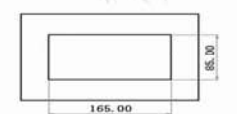
Right side diagram (unit: mm)



## Installation Guide

### Embedded Installation

The installment surface must be suitable for Type 4 interior use or equal condition for switchboard box. Partition board thickness: 0.5~9.0 mm  
Dimension of the opening for installation is showed in the following figure:



### DIN Rail Installation

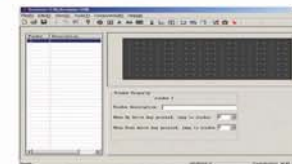
Standard 35mm DIN rail for installation



### Screw-down Installation



## The software



### Password protection levels

Two levels of password protection function to ensure safe operations

### Alarm function

Coil	Alarm information
M0	Water level over
M1	Water level lower
M2	Loop current over 10A
M3	Turn up limit switch
M4	The temperature amounts to 1000 degrees

### Trend line monitor



### Function key



### Analog display



## Operation control

